

NW Corner, SW/4  
Sec. 12-117N-R3E

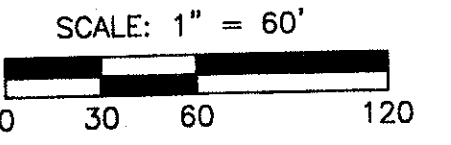
West line, SW/4 Sec. 12-117N-R3E

COLLEGE AVENUE

SW Corner, SW/4  
Sec. 12-117N-R3E  
Harrison Monument  
Find. per M.C.S.R.

LEGEND

- Aerial Electric / Telephone Lines
- Power Pole
- Power Pole with Transformer
- Guy Anchor
- Electric Control Box
- Electric Meter
- Water Valve
- Yard Hydrant
- Fire Hydrant
- Gas Meter
- Gas Line Marker
- Manhole
- Sprinkler Head
- Sprinkler Control Valve
- 12" Masonry Wall
- Depressed Curb
- Yard Light
- Light Pole
- Bee-hive Inlet
- Drinking Fountain
- Cable TV Pedestal
- Handicap Sign
- Reinforced Concrete Pipe
- Poly-Vinyl Chloride Pipe
- Dead Call
- Measured Call
- Survey Control Point
- PK Nail Found
- 5/8" Rebar with yellow cap stamped WEIHE ENGR 0012' found (set)
- ACE American Consulting Engineers
- Concrete Area
- Brick Area
- Edge of Asphalt



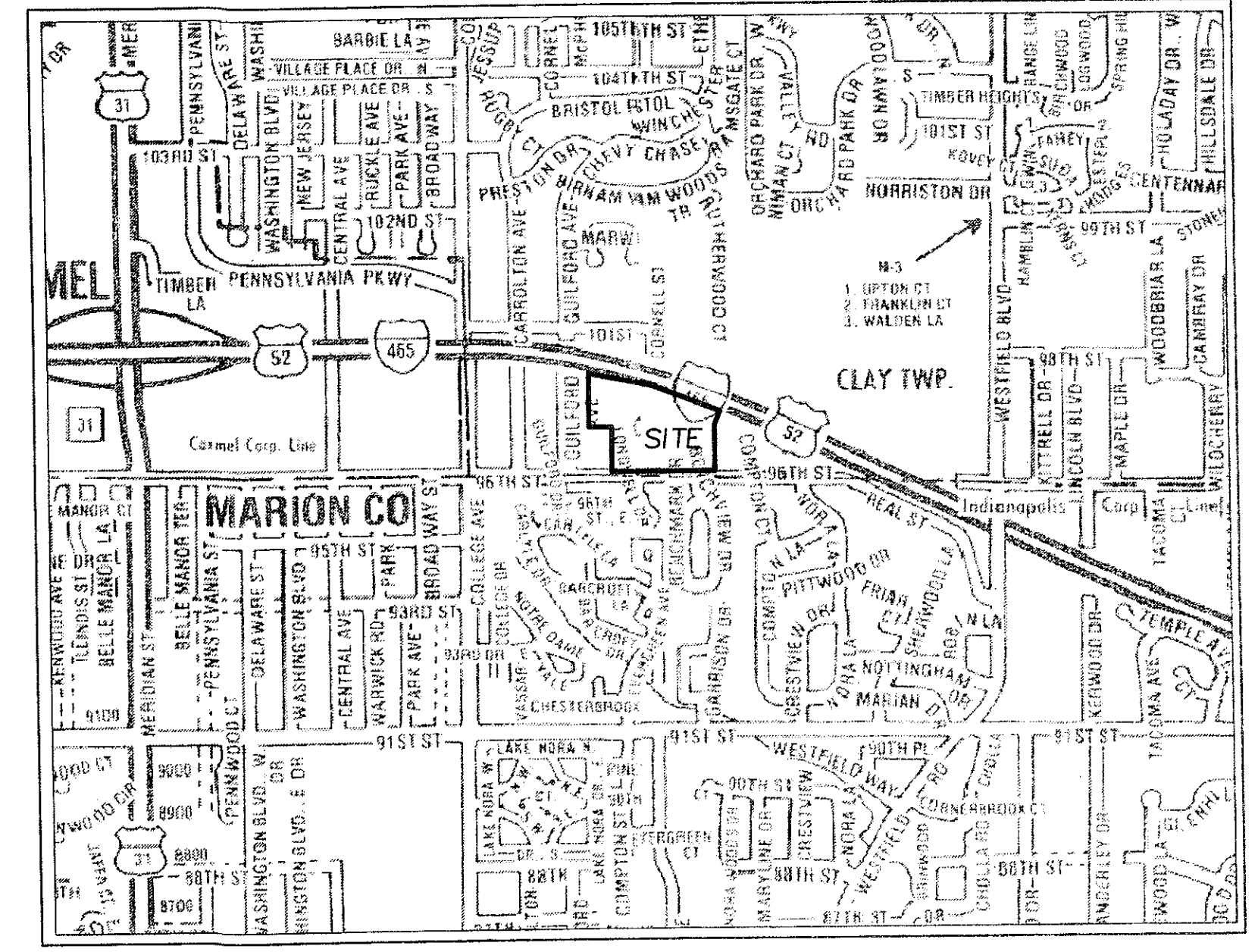
CURB NOTE

All curb on the surveyed tract is 6 inch chairback curb.

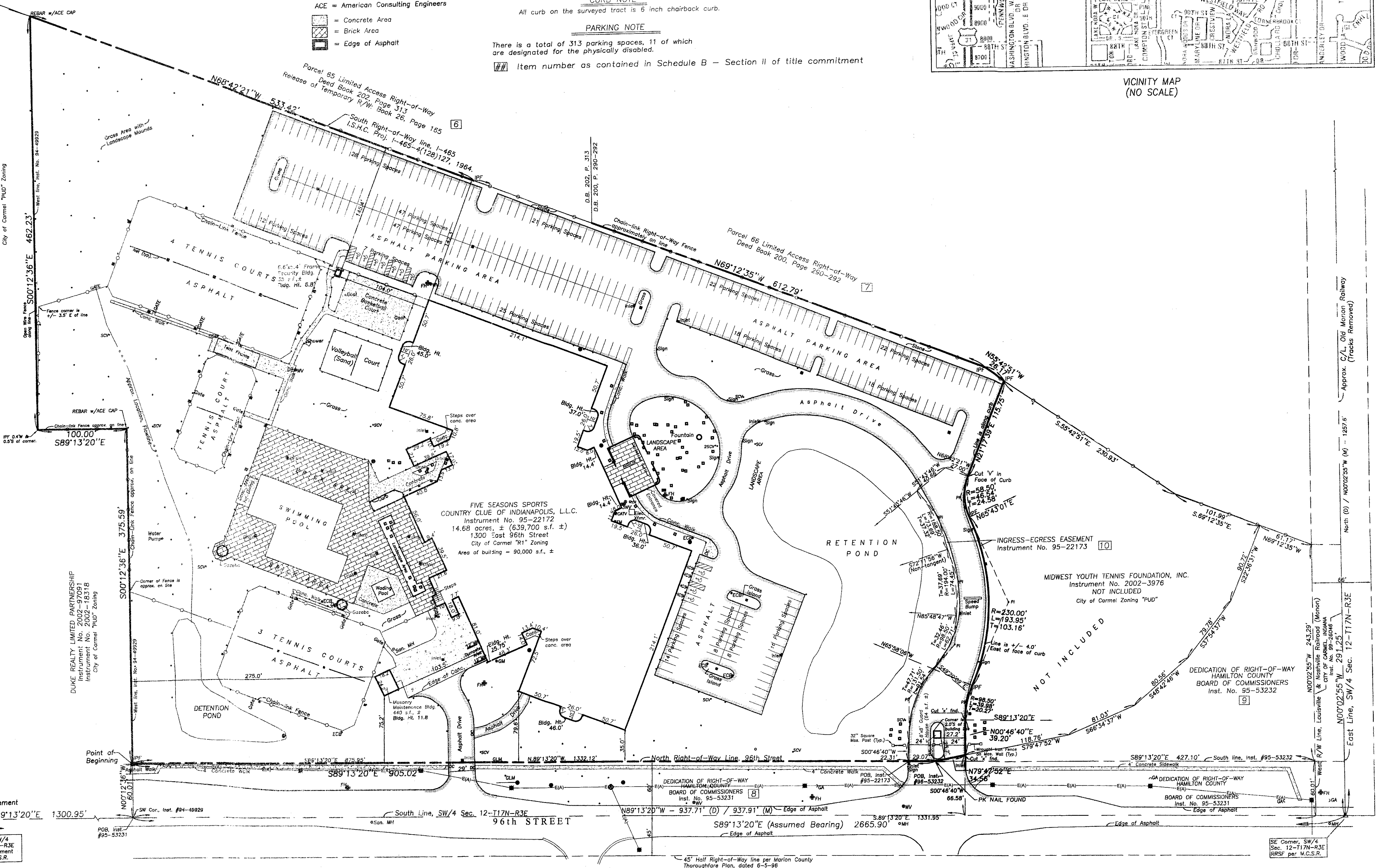
PARKING NOTE

There is a total of 313 parking spaces, 11 of which are designated for the physically disabled.

Item number as contained in Schedule B - Section II of title commitment



VICINITY MAP  
(NO SCALE)



FIVE SEASONS SPORTS COUNTRY CLUB OF INDIANAPOLIS, L.L.C.  
Instrument No. 95-22172  
14.68 acres, ± (639,700 s.f. ±)  
1300 East 96th Street  
City of Carmel "R1" Zoning  
Area of building = 90,000 s.f. ±

MIDWEST YOUTH TENNIS FOUNDATION, INC.  
Instrument No. 2002-3976  
NOT INCLUDED  
City of Carmel Zoning "PUD"

DEDICATION OF RIGHT-OF-WAY  
HAMILTON COUNTY  
BOARD OF COMMISSIONERS  
Inst. No. 95-53232

10503 N. College Avenue  
Indianapolis, Indiana 46280  
weihe.net  
317.846.6611  
800.452.6408  
317.843.0546 fax  
ALLAN H. WEIHE, P.E., L.S. - FOUNDER

**WEIHE**  
**ENGINEERS**  
Land Surveying | Civil Engineering  
Landscape Architecture

PROJECT NO.	WT20726
DWG NAME	
DATE	12/14/12
FIELD BY	ES
DRAWN BY	SH
CHECKED BY	BK
DATE	12/21/12

REVISIONS AND ISSUES:  
REFLECT CURRENT TITLE COMMITMENT  
REFLECT TITLE COMMITMENT REV. #2

**Corporex Capital, LLC**  
1300 EAST 96TH ST., INDIANAPOLIS, IN  
ALTA/ACSM LAND TITLE SURVEY  
PT. SW 1/4 SEC. 12, T17N, R3E, CLAY TWP., HAMILTON CO., IN

PREPARED FOR:  
**Corporex Capital, LLC**  
SHEET NO. **1**  
OF 2  
PROJECT NO. **W120726**